

MIAMI-DADE COUNTY PUBLIC SCHOOLS
PARENT/STUDENT HANDBOOK

ROYAL PALM ELEMENTARY

4200 SW 112 COURT MIAMI, FLORIDA 33165

OFFICE PHONE NUMBER: (305) 221-7961

School Hours: Pre-Kinder, Kindergarten and Grade 1 – 8:10 a.m. – 1:50 p.m.
Grades 2-5 – 8:20 a.m. – 3:05 p.m.
Wednesday -1:50 p.m. dismissal for all Grades.

Before and After School Care Contact: Royal Palm Elementary (305) 221-7961
Extension (2117)

BSC/ASC Hours: 7:00 – 8:15 a.m. Morning Care
1:50 – 6:00 p.m. After School Care (ASC)
Call the ASC office to make arrangements.

SCHOOL WEBSITE: WWW.ROYALPALMELEMENTARY.COM

FACEBOOK: ROYALPALMELEMENTARYACADEMYOFDISCOVERY

TWITTER: @ROYALPALMELEM

INSTAGRAM: ROYAL PALM ELEMENTARY



MIAMI-DADE COUNTY PUBLIC SCHOOLS
PARENT/STUDENT HANDBOOK

Miami-Dade County Public Schools
The School Board of Miami-Dade County, Florida

Ms. Perla Tabares Hantman, Chair

Dr. Martin Karp, Vice Chair

Dr. Dorothy Bendross-Mindingall

Ms. Susie V. Castillo

Dr. Lawrence S. Feldman

Dr. Steve Gallon III

Ms. Lubby Navarro

Dr. Marta Pérez

Ms. Mari Tere Rojas

Josh Rios, Student Advisor

SUPERINTENDENT OF SCHOOLS

Mr. Alberto M. Carvalho

SCHOOL OPERATIONS

Mrs. Valtena G. Brown

Deputy Superintendent/Chief Operating Officer



MIAMI-DADE COUNTY PUBLIC SCHOOLS PARENT/STUDENT HANDBOOK

Vision Statement

We provide a world class education for every student.

Mission Statement

To be the preeminent provider of the highest quality education that empowers all students to be productive lifelong learners and responsible global citizens.

Values

Excellence - *We pursue the highest standards in academic achievement and organizational performance.*

Equity - *We foster an environment that serves all students and aspires to eliminate the achievement gap.*

Student Focus - *We singularly focus on meeting our students' needs and supporting them in fulfilling their potential.*

Innovation - *We encourage creativity and adaptability to new ideas and methods that will support and improve student learning.*

Accountability - *We accept responsibility for our successes and challenges and seek to transparently share our work in an ethical manner, as we strive towards continuous improvement.*



MIAMI-DADE COUNTY PUBLIC SCHOOLS PARENT/STUDENT HANDBOOK



Miami-Dade County Public Schools

giving our students the world

Superintendent of Schools
Alberto M. Carvalho

Miami-Dade County School Board
Peila Tabares Hantman, Chair
Dr. Martin Karp, Vice Chair
Dr. Dorothy Bendross-Mindingall
Susie V. Castillo
Dr. Lawrence S. Feldman
Dr. Steve Gallon III
Lobby Navarro
Dr. Marta Pérez
Mari Tere Rojas

August 2018

Dear Parent/Guardian,

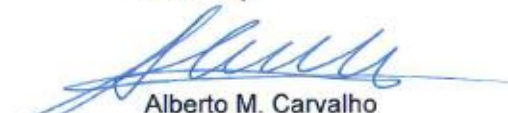
On behalf of the School Board and the dedicated teachers and staff of Miami-Dade County Public Schools (M-DCPS), it is with much pride and enthusiasm that I welcome you to the 2018-2019 school year. We are eager to greet your child and provide him/her with the knowledge and skills needed to thrive in our increasingly globalized society. Students can expect to receive a world-class education that celebrates their uniqueness while fostering curiosity and creativity within a safe and secure learning environment.

This Parent/Student Handbook outlines the major policies and procedures that guide student life in our school system. I strongly encourage you to familiarize yourself with its contents as students are expected to conduct themselves in accordance with the information and guidelines contained herein.

Furthermore, it is my hope that you and your child will avail yourselves of the numerous resources we provide. As a parent/guardian, you are a vital partner in your child's education and are welcome to actively participate in school and district functions. I encourage you to stay connected by downloading the M-DCPS application on your mobile device and by following us on social media (Twitter, Facebook, Instagram, etc.). For more information regarding specific resources and activities at your child's school, please contact the school directly and ensure that the school's staff is provided with your most updated contact information.

Thank you for your partnership and for entrusting us with your child's education. I wish you and your child much success this academic year.

Sincerely,



Alberto M. Carvalho
Superintendent of Schools

AMC:cg
L68

School Board Administration Building • 1450 N.E. 2nd Avenue • Miami, Florida 33132
305-995-1000 • www.dadeschools.net



MIAMI-DADE COUNTY PUBLIC SCHOOLS
PARENT/STUDENT HANDBOOK

TABLE OF CONTENTS

Message from Principal

School's Mission Statement

Faculty Roster

Feeder Pattern Schools

School Information

- *Bell Schedule (as applicable)*
- *Early Sign Out*
- *Late Arrival*
- *Lost and Found School Policy (as applicable)*
- *Opening and Closing Hours of Schools (as applicable)*
- *Replacement ID Badges*

Important Dates

- *Back to School Nights - Open House (as applicable)*
- *Interim Progress Report & Report Card Distribution*
- *School Calendar of Events (as applicable)*

Academic Programs – Student Progression Plan (SPP)

Before/After School Care Program & Middle School Enrichment After School Program

Bring Your Own Devices (BYOD)

Clinic (full-service as applicable)

Closing of School

Community School Program

Dismissal

- *Bicycles/Skateboards (as applicable)*
- *Rainy Day Dismissal (as applicable)*
- *Students Drop-Off Pick-up (as applicable)*

Emergency Contact Information

Fieldtrips

Flu Vaccine

Homework



MIAMI-DADE COUNTY PUBLIC SCHOOLS PARENT/STUDENT HANDBOOK

Interscholastic Athletics/Intramurals (as applicable)

Mealtime Environment

- *Free Breakfast*
- *Free/Reduced Price Lunch Program*
- *Meal Prices*
- *PAYPAMS*
- *Peanut-Allergies/Peanut-Free School*

Parent Academy

Protocols for Addressing Concerns

Recess

Safety and Security

- *Code Yellow/Code Red*
- *Emergency Operations Plan*
- *Fire Drills*
- *Visitors*

School Activities/Clubs

School Center for Special Instructions (SCSI) (as applicable)

School Class Pictures Process

School Transportation

Special Education

Student Records

Student Services

Student Success Centers

Toolkits

- *Back to School Toolkit*

Transgender

Verification of Residency



MIAMI-DADE COUNTY PUBLIC SCHOOLS PARENT/STUDENT HANDBOOK

Volunteer Program

Appendix A – School Calendars

Appendix B – School Board Policies and State Statutes



MIAMI-DADE COUNTY PUBLIC SCHOOLS
PARENT/STUDENT HANDBOOK

Message from the Principal



Dear Parents,

We pride ourselves in having a warm and aesthetically inviting building. I take pride in having highly qualified teachers who are excited about teaching and who create a supportive climate in which each student is encouraged to develop academically to his/her fullest potential.

This handbook was developed to help you and your child become aware of the policies and procedures at our school and the District. We encourage you to carefully read this packet and share the information with your child.

We hope you will get involved in your child's education and we look forward to having a fantastic school year.

If you have any additional questions or need assistance in any way, please do not hesitate to contact us as (305)221-7961.

Sincerely,

Marta Garcia



ROYAL PALM ELEMENTARY

Vision Statement

We are committed to prepare our students with the skills to function successfully in a technology driven information age. Our goal is to provide the foundation that will enable them to succeed in school, to advance in their chosen careers, and to become informed citizens capable of making the critical decisions necessary in a democratic society.

Mission Statement

The mission of Royal Palm Elementary School teachers and staff is to provide students with the necessary skills to succeed in all academic areas. Technology will be utilized to support instruction across the curriculum in a comprehensive effort to enhance students' critical thinking skills which are essential in a rapidly changing society.



MIAMI-DADE COUNTY PUBLIC SCHOOLS PARENT/STUDENT HANDBOOK

ROYAL PALM ELEMENTARY 2018-2019 Tentative Faculty/Staff Roster

Principal: Marta Garcia

Assistant Principal: Myrtis Thomas

<u>Pre-Kindergarten</u>		
* P01 Ms. Lissette Gomez	VPK	8001
P02 Ms. Cynthia Keiser-Jiménez	VPK	8002
<u>Kindergarten</u>		
* KB3 Ms. Carmen Perdomo		E001
K06 Ms. Jennifer Livermore		4006
K24 Ms. Nancy Márquez		7024
K25 Ms. Tiana Olcese		7025
<u>Grade 1</u>		
102 Ms. M. Mena/ J. Castillo		3002
103 Ms. Carmen Spiegel		3003
* 104 Ms. Jo Ann Blanco		3004
110 Ms. Linda Askari		4010
<u>Grade 2</u>		
205 Ms. Dana Kelly		4005
207 Ms. Silvia Livermore		4007
208 Ms. Ana Naya		4008
* 209 Ms. Daneisy Mansito		4009
<u>Grade 3</u>		
316 Ms. María Lavin		6016
318 Ms. Y. Alfonso-Vo		6018
* 319 Ms. Teresa Medina		6019
320 Ms. Alexandra Martin		6020
<u>Grade 4</u>		
411 Ms. Ileana Morado		5011
412 Ms. Lelys Malespin		5012
* 413 Mr. Cristóbal Wiese		5013
414 Ms. Mayra Hernández		5014
<u>Grade 5</u>		
521 Ms. Christina Yip		7021
* 522 Ms. Carlianne Panzer		7022
523 Ms. Kathleen Fernández		7023
531 Ms. Marlene Villavicencio		7020
<u>Art</u>	Ms. Gloria Parlade	E007
<u>Music</u>	15 Ms. Maria Owen	5015
<u>Physical Education</u>		
	Mr. Thomas Wild	010
<u>Gifted</u>		
	Music Rm. Ms. Marcia Cardona	E006
<u>Bilingual Department</u>		
17	Ms. Alicia Ulloa	6017



MIAMI-DADE COUNTY PUBLIC SCHOOLS PARENT/STUDENT HANDBOOK

CCTV 02	Ms. Irene Childs Ms. Milagro Mena	
ESOL 11A	Ms. Nancy Pérez	5010
Reading Interventionist Rm 01	Ms. Dannette Hunter	3001
Counselor 011	Ms. Melissa Herrero	2011
SPED * Speech Rm	Ms. Clary Garcia	E002
CTV	Ms. Mercedes Lazo	R202
	Ms. Jennifer Castillo	3002
Speech 013	Ms. Rosa Giannoni	2013
Hourly Teacher TBA		
Media Clerk	Ms. Adalys Jorge	
Paraprofessionals Ms. María Jane	Ms. Yanet Rodríguez	
Ms. Fabiola Córdova	Mr. Lázaro Padrón	
Social Worker	Ms. Darline Alvarez-Arce	
School Psychologist	Ms. Arlen Fajardo	
Microsystems Technician	Mr. Andrew Domena	
Office Staff Ms. Tatiana Vega	Secretary-Treasurer	
Ms. Paola Castelli	Elem. School Asst.	
Ms. Claudia Rivero	Comm. School Specialist	
Ms. Vivian Ruiz	C.I.S.	
Ms. Floricelda Bravo	Clerical Support	
ASC Manager	Tatiana Vega, Cristóbal Wiese Modesta Nicolás	
Cafetería Staff Ms. Modesta Nicolás	Manager	
Ms. Juana Lorenzo	Ms. Myrtha García	
Ms. Francis Álvarez	Ms. Ana Hernández	
Ms. Erika Garrido		
Lunch Room Monitor	Ms. Ileana Cuña	
Custodial Staff Mr. Roger Jimenez	Head Custodian	
Mr. Jorge Rodríguez	Lead Custodian	
Ms. Liz Ruiz Vega		
Ms. Guadalupe Lupiáñez		
Security Monitor	Mr. Raúl Bocanegra Ms. María Serrano	Mr. Carlos Romero
School Nurse	Miriam Espinoza /Eddie Barrios	



MIAMI-DADE COUNTY PUBLIC SCHOOLS PARENT/STUDENT HANDBOOK

Feeder Pattern Schools

Elementary Schools

ROYAL PALM ELEMENTARY

BLUE LAKES ELEMENTARY

OLYMPIA HEIGHTS ELEMENTARY

DR. CARLOS J. FINLAY ELEMENTARY

TROPICAL ELEMENTARY

WESLEY MATTHEWS ELEMENTARY

CYPRESS K-8

Middle Schools

RIVIERA MIDDLE SCHOOL

CYPRESS K-8

Senior High School

SOUTHWEST HIGH



MIAMI-DADE COUNTY PUBLIC SCHOOLS PARENT/STUDENT HANDBOOK

School Information

- **Early Sign Out**
The early release of students causes disruption to the academic performance of all students and may create safety and security concerns. No students shall be released within the final thirty (30) minutes of the school day unless authorized by the Principal or Principal's designee (i.e., emergency, sickness).
- **Late Arrival**
Students who are tardy to school must report to the Attendance Office to secure an admit. Excessive tardies may result in loss of privileges, detention, parent conference, and/or suspension.
- **Lost and Found School Policy**
Our lost and found is located in the main office.
- **Opening and Closing Hours of Schools**
 - **School Hours:** Pre-Kinder, Kindergarten and Grade 1 – 8:10 a.m. – 1:50 p.m.
Grades 2-5 – 8:20 a.m. – 3:05 p.m.
 - Wednesday -1:50 p.m. dismissal for all Grades.
 - **Before and After School Care Contact:**
 - Royal Palm Elementary (305) 221-7961 Extension (2117)
 - **Hours of Operation:**
 - 7:00 – 8:15 a.m. Morning Care
 - 1:50 – 6:00 p.m. After School Care (ASC)
 - Call the ASC office to make arrangements.
- **Replacement ID Badges**
Students will be provided with an initial ID Badge at no charge. If the ID Badge is lost or misplaced, a duplicate will be issued at an additional cost.

Important Dates

- **Back to School Nights – Open House**

School Level	Window Period	School Date
Elementary/K8 Center	September 4-7, 2018	September 2018
Middle Schools	September 12-14 & 17, 2018	
Senior High	October 3-4 & 8-9, 2018	
Special Centers	October 3-4 & 8-9, 2018	

- **Interim Progress Report & Report Card Distribution**

Grading Period	Interim Progress Report Distribution	Report Card Distribution



MIAMI-DADE COUNTY PUBLIC SCHOOLS PARENT/STUDENT HANDBOOK

1	9/21/2018	11/09/2018
2	11/30/2018	2/01/2019
3	3/01/2019	4/12/2019
4	5/3/2019	6/21/2019

Academic Programs – Student Progression Plan (SPP)

Provides guidance to teachers, school and district administrators, parents and other stakeholders regarding the requirements and procedures for students to progress from one grade to the next, kindergarten through grade 12 and adult education. The information presented in this document is derived from requirements set forth by Florida Statutes, State Board of Education Rules and Policies established by The School Board of Miami-Dade County.

Before/After School Care Program & Middle School Enrichment After School Program

For those parents considering going back to work and/or are presently working, there are 224 low cost Before and After School Care programs that serve both Elementary and K-8 Center students and 62 Middle School Enrichment After School programs that help tutor middle school students throughout the Miami-Dade County School district. Each of these programs are staffed with state certified instructors, state certified program managers, or state certified activity leaders who are all prepared to enrich and expand the after-school experience of the students they serve.

This year, Miami-Dade County Public Schools will offer 286 After School programs on school days. Before-school care programs will be provided as needed.

After-school care programs are conducted from the time of school dismissal until 6:00 p.m. Before-school care programs begin approximately one hour before school starts. Summer Camp operates from 7:00 a.m. until 6:00 p.m. Parents should check with their child's school for specific start times.

All after-school care programs provide planned activities, which include homework assistance, indoor and outdoor games, arts and crafts, snack time and various recreational activities. Many programs offer reading and math tutoring, music, ceramics, chess, drama and other classes designed to provide participants with a variety of educational and enrichment experiences. Before-school care programs provide supervised, quiet activities for students.

The cost of Elementary and K-8 after school care is \$40 per week; the cost of Middle School Enrichment after school care is \$40 per week; the cost of before school care is \$20 per week and the cost of Summer Camp is \$100.00 per week. These programs are offered by one of seven providers:

- Miami-Dade County Public Schools Principal Operated Before After-School Programs
- Young Men's Christian Association (YMCA)
- Young Women's Christian Association (YWCA)
- Family Christian Association of America (FCAA)
- Sunshine After-School Child Care (SASCC)
- South Florida After-School All Stars (SFASAS)



MIAMI-DADE COUNTY PUBLIC SCHOOLS PARENT/STUDENT HANDBOOK

Bring Your Own Device (BYOD)

Bring Your Own Device allows students, parents, staff and guests to use their own technology during the day to enhance the learning experience. Examples of the types of technology which can be used are Windows laptops/tablets, Mac laptops, Android tablets, and iPads.

Clinic

Royal Palm Elementary has a full-time nurse. Please contact our main office if you would like to speak to the nurse regarding any medical condition(s) that your child may have.

Closing of School

The emergency closing of a school for any cause, such as weather or in which the safety of individuals may be endangered, is only at the discretion of the Superintendent of Schools.

Community School Program

The Community School Program offers an opportunity for the public-school system to determine the needs of the community and provides a mechanism to meet those needs. The curriculum of the Community School Program is as wide and varied as the needs of the community it serves. Community schools provide programs that are funded by fees, tuition, grants, and donations, on community school sites, in adult centers, in satellite programs, and at off-campus, non-public school locations throughout Miami-Dade County.

Each of the 39 Community Education Centers offer classes for individuals of all ages, skill levels and language capabilities. Students enrolling in language or computer classes have the opportunity to enhance the job skills needed to satisfy the demands of today's world. Annually, thousands of people have taken advantage of these recreational and educational opportunities, and if an individual or group wants to acquire a specific new skill, Miami-Dade County Public Schools can work with each to create a class that suits the needs of all interests.

For more specific information on Miami-Dade County Public Schools Community Education and Before and After School Care programs or Middle School Enrichment After School programs, please log on to our website at www.dadecommunityschools.net or please call Mr. Victor Ferrante, Executive Director at 305-817-0014.

Dismissal

- ***Bicycles/Skateboards*** (as applicable)
Parents please complete the dismissal form sent home the first day of school.
- ***Rainy Day Dismissal*** (as applicable)
Parents please complete the dismissal form sent home the first day of school.
- ***Student Drop-Off Pick-up*** (as applicable)

Royal Palm Elementary is committed to providing your child with a safe and nurturing learning environment. In order to maintain the highest possible security measures for our students, please read carefully the NEW morning procedures **EFFECTIVE WEDNESDAY, AUGUST 29th**.



MIAMI-DADE COUNTY PUBLIC SCHOOLS PARENT/STUDENT HANDBOOK

The school will allow parents to enter the school the first 7 school days in order for you to meet and greet your child's teacher.

- **At 7:00 am**, the gate next to the cafeteria will open for the students who are in the Before School Care Program. **ONLY** students registered for this program will be allowed into the building.
- **At 7:45 am**, students will be allowed to enter the school through the gate next to the cafeteria. **Students must report directly to the cafeteria and remain there. Kindergarten, First, and Second Grade teachers will pick up students from the cafeteria at 8:20 am. Students in grades 3rd through 5th will be dismissed from the cafeteria at 8:15 am and will be sent to their classrooms.**
- **ALL STUDENTS MUST ENTER THE SCHOOL BY THE CAFETERIA GATE UNTIL 8:20 AM. NO PARENTS WILL BE ALLOWED IN THE SCHOOL DURING MORNING HOURS.**
- **At 8:00 am**, the gate next to the main office will open for any parent that needs to visit the office.
- **Additionally, the gate on 113th Avenue by the portable will open at 8:05 am for PRE-KINDERGARTEN STUDENTS ONLY.** ALL PRE-KINDERGARTEN students must use this entry point. Free breakfast will be provided in the class for our Pre-K students.
- **PLEASE NOTE: ALL OTHER GATES WILL REMAIN CLOSED AND LOCKED. THESE INCLUDE THE GATES ON 42ND TERRACE AND 113TH AVENUE BY ROOMS 4 and 5. ALSO, THE ENTRANCE BETWEEN ROOMS 10 AND 11.**
- **The cafeteria gate AND the Pre-K entry point will close at 8:20 am.** Students in Pre-K, Kindergarten, and First Grade arriving after the locked gate need to report to the main office for a tardy pass.
- **After 8:20 am, the only entry/exit point until dismissal will be the gate by the main office.** Visitors entering the school will need to pass through security with a valid picture ID and a visitor's pass will be issued if applicable.
- Tardy students and early dismissal students will be processed as usual in the main office. **Students will be escorted to/from class by school personnel.** The only parents permitted to go to a classroom will be those with a previously scheduled parent/teacher conference and an issued visitor pass.
- **ALL PARENTS MUST USE THE FRONT ENTRANCE TO DROP OFF THEIR CHILDREN IN THE MORNING. In order to keep traffic flowing, we encourage you to drop off your child and continue moving.**

As always, we thank you for your continued support and cooperation in helping to keep our children safe. Please call the office if you have any questions and/or concerns.



MIAMI-DADE COUNTY PUBLIC SCHOOLS PARENT/STUDENT HANDBOOK

Student Pick Up

In order to maintain the highest possible security measures for our students, please read carefully the following procedures:

- Students in **Pre-K through 1st grade** are dismissed at 1:50 p.m. every day. Please read carefully the following paragraph. Primary students in rooms #1 through #10 will dismiss on the south side of the building from the back door of their rooms. The hallway leading to the school will be closed. Ms. Perdomo, Ms. Marquez, and Ms. Olcese will dismiss on the west side of the school (near the portable). The students will exit through the gate. The gates will close at 2:05 p.m. Any late pickups will be processed through the office.
- Effective Monday, August 20, 2018, every day dismissal (Mon.-Fri.) for 2nd through 5th grades will be as follows:
- **SECOND GRADE** students will dismiss on the south side of the building from the back door of their rooms. The hallway leading to the school will be closed.
- **THIRD AND FOURTH GRADE** will dismiss students from the front of the school (East side).
- **FIFTH GRADE** will dismiss students from the gate located by the portable located on the west side of the school. **On Wednesdays, students will be dismissed from the gate located between Rooms 10 and 11.**
- Students that are not picked up on time from their classrooms will be taken to the Main Office.
- Students who walk home must have the form, Dismissal Plan, included in the Parent Bulletin (Return Home Package) completed and signed by the parents indicating the child can walk home by Tuesday, August 21, 2018.

Please call the office if you have any questions or concerns. As always, we thank you for your support and cooperation in helping to keep our children safe.

Elevator *(as applicable)*

The school elevator is to be used by individuals who are handicapped/injured and cannot use the stairs. However, Royal Palm Elementary does not have an elevator.

Emergency Contact Information

Emergency Student Data Forms are distributed during the first week of school. Students are expected to bring the forms home and present them to their parents/guardians. The form must be carefully completed and returned. The information provided on the Emergency Student Data Forms will enable school staff to contact the parent/guardian immediately in the case of an emergency. Parent/Guardian(s) that provide a cell phone number will receive text messages should an emergency arise. Students may only be released from school to the persons listed on



MIAMI-DADE COUNTY PUBLIC SCHOOLS PARENT/STUDENT HANDBOOK

the form after presenting a picture identification. No persons, other than school staff, will have access to the information submitted.

Fieldtrips

All fieldtrips must be approved by the principal and Region Superintendent. Participation in fieldtrips requires that the student present a fieldtrip form signed by the parent/guardian to his/her teacher(s) in advance. In addition, at times vendors who have a “no refund” policy will require schools to pay the full amount of the fieldtrip prior to the event. In this case, students/parents will be notified in advance of the vendor’s “no refund” policy.

Flu Vaccine

Miami-Dade County Public Schools has partnered again with Healthy Schools, LLC for the 2018-2019 school year to provide **FREE** flu vaccines to students enrolled in M-DCPS. This year’s “**TEACH FLU A LESSON**” student vaccination campaign will begin **September 11 thru October 11**. Each school will have a specific clinic date.

Parents/guardians have the option of providing consent through the Parent-Portal using their digital devices or complete a paper consent form. Parents/Guardians **MUST** provide consent if they want their child to receive the flu vaccine. Parents/Guardians should contact their child’s school to determine when the flu vaccine will be offered at their child’s school.

Homework

Principals are encouraged to work with teachers and parents to implement guidelines found in [Homework Policy 2330](#). Teachers are required to provide students with make-up assignments once the absence has been excused; however, it is the responsibility of the student to request the assignments from the teacher(s).

HOMEWORK

Homework is important to student learning at school. The purpose of this homework plan is to guide teachers, parents and students in ensuring that homework is meaningful and supports the learning experience for all students.

RULES FOR HOMEWORK

- Activities or assignments that students can complete **independently**. Carefully constructed as to be completed within a reasonable time allotment, **with minimal adult help**.
- Connected to grade level or subject matter curriculum.
- Connected to class instruction.
- **Engaging, purposeful and relevant.**
- **Consideration shall be given to quality over quantity.**

TEACHER GUIDELINES

Review, discuss and return, if collected, homework in a timely manner.

Whenever possible, communicate and coordinate assignments so that students do not receive an overload of homework.



MIAMI-DADE COUNTY PUBLIC SCHOOLS PARENT/STUDENT HANDBOOK

Explain homework assignments to the students prior to the assignment. Teachers shall communicate homework assignments in at least one of the following ways: send a packet home, write assignment on the board, require students to record it, and/or make available through emails, websites or apps. (example: Remind 101)

The teacher will (also) consider a student's Individualized Education Plan or 504 Plan in regards to homework.

Teach techniques that can help students allocate their time wisely, meet their deadlines, and develop good personal study habits.

Identify the access that students will have to materials for projects and other homework assignments – taking into account affordability, resource materials from the library media center, assistance and tutoring opportunities, and technology resources.

Communicate with parents to inform them about homework expectations, policies, and procedures.

HOMWORK TIME EXPECTATIONS

The recommended minutes include assignments for ALL subject areas and teachers COLLECTIVELY per school day.

K-1: 30 minutes

2-3: 45 minutes

4-5: 60 minutes

In addition, students shall be encouraged to allot time to read for pleasure. Reading for pleasure and music practice times are not included in the time parameters shown.

SHARING OF CONCERNS

Teachers and parents shall communicate with each other at the earliest possible opportunity once the student has demonstrated consistent inability to complete homework and discuss possible solutions.

Children who demonstrate quality effort and spend sufficient time attempting to complete homework should be stopped when a parent observes that continuing is detrimental to the child's well-being. In such cases, parents should note the amount of time spent on the assignment and sign the paper.

If a child is consistently unable to complete assigned work, the parent should contact the teacher first for support and accommodations as necessary. Teachers should also contact parents if a child consistently is unable to complete the assigned work

Interscholastic Athletics/Intramurals (as applicable)

The Division of Athletics, Activities and Accreditation works with M-DCPS school sites to provide students with opportunities to participate in athletics at various levels. Athletic programs are offered at K-8 Centers, middle schools and high schools. At the middle schools, athletics consists of intramural and interscholastic programs. At the high school level, interscholastic programs are offered at most senior high schools.

For participation in interscholastic athletics at the middle school level, a student must have a 2.00 GPA in conduct and academics to participate. His or her parent must sign the M-DCPS *Middle*



MIAMI-DADE COUNTY PUBLIC SCHOOLS PARENT/STUDENT HANDBOOK

School Athletic Program Consent and Release from Liability Certificate. For participation in interscholastic athletics at the high school level, a GPA of 2.00 in conduct and academics is required except for incoming freshmen. All participants must purchase athletic and/or football insurance to participate and must have a current physical form on file.

A home education student must register his or her intent to participate in interscholastic extracurricular activities as a representative of the school before participation.

The parents and student must also sign the *Contract for Student Participation in Interscholastic Competitions or Performances.* The District also has policies concerning transfer students and participation in athletics. If a parent has questions concerning these policies, he or she should contact the Division of Athletics, Activities and Accreditation.

Mealtime Environment

School lunchtime should be an opportunity to encourage healthy lifestyle, promote socialization that will affect early behaviors.

The Department of Food and Nutrition serves healthy meals daily. Please visit nutrition.dadeschools.net for details on menus, programs, and services.

- **Free Breakfast**

Miami-Dade County Public Schools offers breakfast free of charge to all M-DCPS Students. The breakfast at no charge is not dependent on the student qualifying for free/reduced price meals at lunch.

- **Free/Reduced Price Lunch Program**

The USDA Child Nutrition Programs as administered by Miami-Dade County Public Schools provide free and reduced priced lunch for children unable to pay the full price. In place of the paper application, School Meal Program Brochures are distributed to all students informing parents on the application process and meal program. Parents are encouraged to complete an online application at the Department of Food and Nutrition at freeandreducedmealapp.dadeschools.net. Paper applications are available in the school front office upon request. Many students are approved through Direct Certification and do not submit a lunch application. If approved for meal benefits, the approval status is valid throughout the school year, the summer, and approximately the first twenty days of the next school year.

- **Meal Prices**

Breakfast	School Lunch	Prices
All Students No Charge	Elementary Students	\$ 2.25
Adults \$ 2.00	Middle/Secondary Students	\$ 2.50
	Reduced Price lunch, all grade levels	\$ 0.40
	Adults	\$ 3.00



MIAMI-DADE COUNTY PUBLIC SCHOOLS PARENT/STUDENT HANDBOOK

- **PAYPAMS**

Miami-Dade County Public School's Department of Food and Nutrition allows parents/guardians the convenience to pay online for their child's meals with a credit or debit card at paypams.com. Parents/guardians create an account in PayPams for the child, and will be able to access the following:

- a. view the account balance
- b. schedule automatic payments
- c. receive low-balance e-mail reminders
- d. view a report of daily spending and cafeteria purchases

- **Peanut Allergies**

Parents/Guardians must notify the school principal of any allergy or other medical condition their child has and request the appropriate forms for completion.

Parent Academy

The Parent Academy (TPA) is part of the Department of Family Support Services, created to engage and support families in the educational process. TPA helps caregivers become more involved in their children's education and empowers them to set and achieve personal empowerment goals for higher education and career advancement by providing free, year-round workshops, classes and events at schools, libraries, parks, colleges, private businesses and neighborhood centers across the county. TPA also provides valuable training and information on relevant topics that impact children's lives, including helping children learn, parenting skills, financial management, health and wellness.

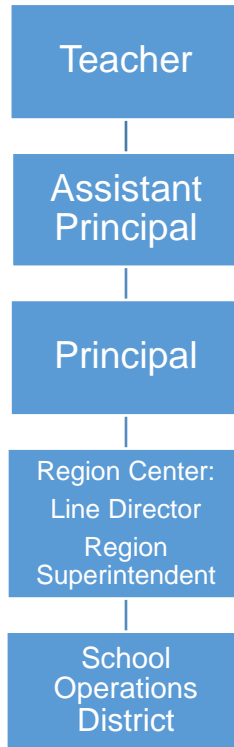
Parents can participate in workshops and classes that are aligned to their needs and convenient to their homes and workplaces. For additional information, please call The Parent Academy at 305-271-8257.

Protocol for Addressing Concerns



MIAMI-DADE COUNTY PUBLIC SCHOOLS PARENT/STUDENT HANDBOOK

For issues involving an individual teacher or class, parent/guardian address their concerns to the following individuals in the order below.



Recess

Recess is supervised, unstructured playtime where children have choices, develop rules for play and release energy and stress. Recess will be conducted outdoors when weather permits. In the case of inclement weather, appropriate recess activities will be conducted indoors.

Schools shall provide at least 100 minutes of supervised, safe, and unstructured free-play recess each week for students in kindergarten through grade 5, so that there are at least 20 consecutive minutes of free-play recess per day.

Safety and Security

- ***Code Yellow/Code Red***

In the event of an emergency, the primary responsibility of all school personnel is to provide for the safety of all students. In the event a school administrator announces a possible threat to students and staff safety exists within the community (Code Yellow), or an imminent threat to students and staff safety exists within the school (Code Red) students, faculty and staff will comply with all the procedures outlined in the Miami-Dade County Public Schools Critical Incident Response Plan and remain on lockdown until a school administrator makes an “All Clear” announcement.

- ***Emergency Operations Plan***

Student and employee safety is a primary concern of the Miami-Dade County Public School (M-DCPS) System. The Emergency Operations Plan (EOP) was created to provide school personnel with the necessary leadership skills and knowledge needed to respond



MIAMI-DADE COUNTY PUBLIC SCHOOLS PARENT/STUDENT HANDBOOK

to critical incidents or other related emergencies that may occur in our schools/community. All schools have a site-specific plan to address all types of critical incidents. These plans address the individual needs of the school and provide guidelines for devising methods for communicating with the staff, students, parents/guardians, and the media during a critical incident or an emergency. Some of the protective action procedures include the evacuation of students/staff from the building(s), evacuation of the disabled and if necessary the relocation of students/staff from the school campus, lockdown procedures and holding/dismissing students during school and community emergencies. Some important tips for parents/guardians to remember during a Critical Incident are as follows:

- Remain calm;
- Monitor media outlets for updates and official messages from M-DCPS;
- Do not flood the school with telephone calls; and
- If the school is on lockdown, wait until the lockdown is lifted before going to the school.

All school administrators, Region Center Superintendents/Directors and all M-DCPS Police officers have been adequately trained in the school EOP and are prepared to respond immediately during a critical incident or emergency to provide safety for all children.

BeSafe Anonymous Reporting System (Insert Flyer)

http://hoover.dadeschools.net/portable_doc/68128_Be_Safe_Anonymous_Reporting_System_Flyer.pdf

- **Fire Drills**

Ten fire drills will take place during the school year according to the Miami-Dade County Public Schools Policy and Emergency Procedures. At the sound of the emergency bell, students must stop what they are doing and follow the teacher's instructions. Students must clear the building promptly by the prescribed route. Any student who is in the hallway or the restroom at the sound of the emergency bell must proceed to the nearest exit and locate the teacher. Students, teachers and staff must remain outside the building until permission is given to re-enter.

- **Visitors**

Due to legal regulations, students are not permitted to have guests attend school with them at any time. Parents/guardians are always welcome and tours may be arranged to view the school. Classroom visits require a 24-hour notice. Visitors must first register with security at the main entrance, sign-in, produce photo identification, and then proceed to register in the main office. Anyone who fails to follow these procedures will be considered a trespasser and is subject to arrest.

School Activities/Clubs



MIAMI-DADE COUNTY PUBLIC SCHOOLS PARENT/STUDENT HANDBOOK

All School Activities, clubs, and organizations must be approved by the principal and conform to the district policies 5845 - Student Activities, 5830 - Student Fundraising and 9211 – Parent Organization, Booster Clubs, and Other Fund-Raising Activities.

- **Clubs**

Miami-Dade County Public Schools' students may participate in a wide variety of activities, including student council, subject-area clubs, honor societies, service clubs, school publications and class activities. School-sponsored clubs may be curriculum-related or noncurricular-related.

Curriculum-related clubs are student groups whose goals are an extension of the activities and objectives in a particular subject area within the school's curriculum. Conversely, noncurricular-related clubs are student groups whose goals are special interest oriented and not directly related to the curriculum. Meetings of noncurriculum-related clubs may be scheduled only at times when instruction is not taking place, either before or after school.

- Royal Palm Elementary offers students the opportunity to be part of our Robotics Club, Safety Patrol Club, Green Thumb/Gardens Club, Literature Club

School Center for Special Instructions (SCSI) (as applicable)

School administrators may elect to assign students to the School Center for Special Instruction (SCSI) as an alternative to suspension from school. SCSI is designed to provide strategies and resources to students focused on learning new behavior skills. When misconduct in a class results in an assignment to SCSI, the student should be removed from only the class in which the misconduct occurred. Continued misconduct can result in the removal from all classes.

School Class Picture Process

The school class picture monies will no longer be collected by school staff for this activity. Collection of monies will be conducted by the photographer and/or photographer's staff.

At no time, shall a staff member, parent, volunteer, or member of a school-allied organization such as the PTA handle school class picture monies.

School Transportation

Miami-Dade County Public Schools will transport more than 60,000 students a day this school year, using a fleet of 1,300 buses on nearly 1100 school-bus routes. The service is for students who live more than two (2) miles from their assigned school and for special needs students.

Before school begins, parents/guardians of all students eligible for bus transportation will receive a post card from the school district identifying the student's bus stop and times of pick-up and delivery. Information on student bus assignments will be posted on the Parent Portal at www.dadeschools.net. The information on bus assignments on the [Parent Portal](#) is updated each night. Parents/guardians are encouraged to check the Parent Portal throughout the school year to obtain the most current information on their children's bus assignment.

Parents interested in determining their child's transportation eligibility should contact their child's school for information.



MIAMI-DADE COUNTY PUBLIC SCHOOLS PARENT/STUDENT HANDBOOK

Special Education

The School Board of Miami-Dade County ensures that all students suspected of having a disability are identified, evaluated, and provided appropriate, specially designed instruction and related services, if it is determined that the student meets the state's eligibility criteria and the parent/guardian consents to initial placement.

As the parent/guardian of a child with disabilities, you are a very important member of the team that plans your child's education. Be informed and get involved. If you have any questions, please contact your child's school. Staff from the special education department and your child's student service provider will help to answer your questions. Additional information may also be found at <http://ese.dadeschools.net/>.

Student Records

Parents, guardians and students are protected by The Family Educational Rights and Privacy Act and the Florida Statutes from individuals' access to information in students' educational records and are provided the right to challenge the accuracy of these records. These laws provide that without the prior consent of the parent, guardian or eligible student, a student's records may not be released, except in accordance with the provisions listed in the above-cited laws. The laws provide certain exceptions to the prior consent requirement to the release of student records, which include, but are not limited to, school officials with a legitimate educational interest and lawfully issued subpoenas and court orders.

Each school must provide to the parents, guardians or eligible students annual notice in writing of their right to inspect and review student records. Once a student reaches 18 years of age or is attending an institution of post-secondary education, the consent is required from the student only, unless the student qualifies as a dependent under the law.

A student enrolled in an Advanced Placement (AP), International Baccalaureate (IB), or Advanced International Certificate of Education (AICE) course who takes the respective AP, IB, or AICE assessment and earns the minimum score necessary to earn college credit, as identified in s. 1007.27(2), meets the requirements of this paragraph and does not have to take the EOC assessment for the corresponding course.

Student Services

The program structure supports educational reform initiatives and takes into consideration current social climate and the unique issues faced by the multicultural/multilinguistic populations enrolled in Miami-Dade County Public Schools.

Student Success Centers

The Student Success Centers provide an educational setting and safe-haven for referred students (ages 11 and older) exhibiting Level III-IV behavior and (with Region approval) habitual Level II infractions of the Code of Student Conduct.

Toolkits

- [Back to School Toolkit](#)



MIAMI-DADE COUNTY PUBLIC SCHOOLS PARENT/STUDENT HANDBOOK

Transgender

The School Board of Miami-Dade County has adopted comprehensive anti-discrimination and anti-bullying policies that require all students be treated with respect regardless of their unique characteristics, including sexual orientation or gender identity. Every student has the right to learn in a safe and accepting school environment and schools have a responsibility to provide a safe and nondiscriminatory environment for all students, including transgender and gender nonconforming students.

These guidelines are intended to promote a positive, proactive approach that upholds and protects the rights of transgender and gender nonconforming students; and best practices to ensure that transgender students and gender nonconforming students have equitable access to all aspects of school life (academic, extracurricular and social) in ways that preserve and protect their dignity.

Verifications of Residency

If verification is not provided or acceptable, the Superintendent may verify the student's residence.

Anyone who knowingly makes a false statement in writing with the intent to mislead a public servant in the performance of his/her official duty is guilty of a second-degree misdemeanor of the second degree under [F.S. 837.06](#). In addition, anyone who knowingly makes a false verified declaration is guilty of perjury, a third-degree felony under [F.S. 95.525](#).

Volunteer Program

The School Volunteer Program is responsible for electronic registration, background checks and trainings of volunteers. There are two different levels of volunteerism.

Level 1 - complete a database background check	Level 2 - complete a fingerprint background check
<ul style="list-style-type: none"> •Day chaperones for field trips •Classroom assistants •Math and/or reading tutors. 	<ul style="list-style-type: none"> •Certified Volunteers •Mentors •Listeners •Athletic/Physical Education assistants •Overnight chaperones.

Any individual interested in volunteering in Miami-Dade County Public Schools must:

- Show a current valid government-issued identification with picture.
- Show a social security card (check name and number).
- Complete a background check.
- Upon clearance, attend an orientation at the school.



MIAMI-DADE COUNTY PUBLIC SCHOOLS
PARENT/STUDENT HANDBOOK

APPENDIX A – School Calendars



MIAMI-DADE COUNTY PUBLIC SCHOOLS PARENT/STUDENT HANDBOOK



MIAMI-DADE COUNTY PUBLIC SCHOOLS 2018-2019 SCHOOL CALENDAR ELEMENTARY AND SECONDARY

July 2018				
M	T	W	T	F
2	3	4	5	6
9	10	11	12	13
16	17	18	19	20
23	24	25	26	27
30	31			

August 2018				
M	T	W	T	F
		1	2	3
6	7	8	9	10
13	14	15	16	17
20	21	22	23	24
27	28	29	30	31

September 2018				
M	T	W	T	F
1	4	5	6	7
10	11	12	13	14
17	18	19	20	21
24	25	26	27	28

October 2018				
M	T	W	T	F
1	2	3	4	5
8	9	10	11	12
15	16	17	18	19
22	23	24	25	26
29	30	31		

November 2018				
M	T	W	T	F
			1	2
5	6	7	8	9
13	14	15	16	
19	20	21	22	23
26	27	28	29	30

December 2018				
M	T	W	T	F
3	4	5	6	7
10	11	12	13	14
17	18	19	20	21
24	25	26	27	28
31				

January 2019				
M	T	W	T	F
	1	2	3	4
7	8	9	10	11
14	15	16	17	18
21	22	23	24	25
28	29	30	31	

February 2019				
M	T	W	T	F
				1
4	5	6	7	8
11	12	13	14	15
18	19	20	21	22
25	26	27	28	

March 2019				
M	T	W	T	F
				1
4	5	6	7	8
11	12	13	14	15
18	19	20	21	22
25	26	27	28	29

April 2019				
M	T	W	T	F
1	2	3	4	5
8	9	10	11	12
15	16	17	18	19
22	23	24	25	26
29	30			

May 2019				
M	T	W	T	F
		1	2	3
6	7	8	9	10
13	14	15	16	17
20	21	22	23	24
27	28	29	30	31

June 2019				
M	T	W	T	F
3	4	5	6	7
10	11	12	13	14
17	18	19	20	21
24	25	26	27	28

- | | |
|--|---|
| <ul style="list-style-type: none"> New Teachers Report Teacher Planning Day Teacher Planning Day - (No Opt) District-wide Professional Development Day | <ul style="list-style-type: none"> Recess Day Beg/End of Grading Period Secondary Early Release Legal Holiday |
|--|---|

Days in Grading Period	
1-	46
2-	44
3-	43
4-	47

For information on employee opt days, please refer to back of calendar.



MIAMI-DADE COUNTY PUBLIC SCHOOLS PARENT/STUDENT HANDBOOK

MIAMI-DADE COUNTY PUBLIC SCHOOLS 2018-2019 SCHOOL CALENDAR ELEMENTARY AND SECONDARY MIAMI, FLORIDA

August 16, 17	Teacher planning days; no students in school
August 20	First Day of School; begin first semester
September 3	Labor Day; holiday for students and employees
September 10*+##	Teacher planning day; no students in school
September 19*+##	Teacher planning day; no students in school
September 27	Secondary early release day
October 25	End first grading period; first semester
October 26	Teacher planning day; District-wide Professional Development Day - not available to opt; no students in school
October 29	Begin second grading period; first semester
November 6	Teacher planning day; District-wide Professional Development Day - not available to opt; no students in school
November 12	Observation of Veterans' Day; holiday for students and employees
November 21*+##	Teacher planning day; no students in school
November 22	Thanksgiving; Board-approved holiday for students and employees
November 23	Recess Day
December 24- January 4, 2019	Winter recess for students and all employees with the exception of Fraternal Order of Police Employees;
January 17	End first semester and second grading period
January 18*+##	Teacher planning day; no students in school
January 21	Observance of Dr. Martin Luther King, Jr.'s Birthday; holiday for students and employees
January 22	Begin third grading period; second semester
February 18	All Presidents Day; holiday for students and employees
March 14	Secondary early release day
March 22	End third grading period; second semester
March 25-29	Spring recess for students and all employees with the exception of Fraternal Order of Police Employees
April 1	Begin fourth grading period; second semester
April 11	Secondary early release day
April 19*+##	Teacher planning day; no students in school
May 9	Secondary early release day
May 27	Observance of Memorial Day; holiday for students and employees
June 6	Last Day of School; end fourth grading period; second semester
June 7	Teacher planning day; not available to opt; no students in school

NOTE: Every Wednesday students in elementary schools (Grades 2-5) and K-8 Centers (Grades 2-8) are released one (1) hour early

Job Category	Beginning Date	Ending Date
Teachers new to the system	August 9, 2018	June 7, 2019
Assistant Principals and 10-month clerical	August 9, 2018	June 14, 2019
Cafeteria Managers	August 13, 2018	June 7, 2019
Satellite Assistants	August 15, 2018	June 6, 2019
All Instructional Staff, Paraprofessionals & Security	August 16, 2018	June 7, 2019
Assistant to Cafeteria Managers/MAT Specialists	August 17, 2018	June 6, 2019
Cafeteria Workers (part-time)	August 20, 2018	June 6, 2019

*Teachers/paraprofessionals and school support personnel may opt to work one or two days, August 14, 15, 2018, or June 10, 11, 2019, in lieu of any one or two of the following days: September 10, 2018, September 19, 2018, November 21, 2018, January 18, 2019 and April 19, 2019. October 26, 2018 and November 6, 2018, are District-wide Professional Development Days and are not available to opt.

+Teachers new to Miami-Dade County Public Schools may opt to work one or two days, June 10, 11, 2019, in lieu of any one or two of the following days: September 10, 2018, September 19, 2018, November 21, 2018, January 18, 2019 and April 19, 2019. October 26, 2018 and November 6, 2018, are District-wide Professional Development Days and are not available to opt.

#Ten-month secretarial and clerical employees may opt to work one or two days, August 7, 8, 2018, or June 17, 18, 2019, in lieu of any one or two of the following days: September 10, 2018, September 19, 2018, November 21, 2018, January 18, 2019 and April 19, 2019. October 26, 2018 and November 6, 2018, are District-wide Professional Development Days and are not available to opt.



MIAMI-DADE COUNTY PUBLIC SCHOOLS PARENT/STUDENT HANDBOOK



MIAMI-DADE COUNTY PUBLIC SCHOOLS 2018-2019 SCHOOL CALENDAR ADULT/VOCATIONAL EDUCATION

August 2018				
M	T	W	T	F
		1	2	3
6	7	8	9	10
13	14	15	16	17
20	21	22	23	24
27	28	29	30	31

September 2018				
M	T	W	T	F
	4	5	6	7
10	11	12	13	14
17	18	19	20	21
24	25	26	27	28

October 2018				
M	T	W	T	F
1	2	3	4	5
8	9	10	11	12
15	16	17	18	19
22	23	24	25	26
29	30	31		

November 2018				
M	T	W	T	F
			1	2
5	6	7	8	9
13	14	15	16	
19	20	21	22	23
26	27	28	29	30

December 2018				
M	T	W	T	F
3	4	5	6	7
10	11	12	13	14
17	18	19	20	21
24	25	26	27	28

January 2019				
M	T	W	T	F
7	8	9	10	11
14	15	16	17	18
22	23	24	25	
28	29	30	31	

February 2019				
M	T	W	T	F
				1
4	5	6	7	8
11	12	13	14	15
18	19	20	21	22
25	26	27	28	

March 2019				
M	T	W	T	F
				1
4	5	6	7	8
11	12	13	14	15
18	19	20	21	22
25	26	27	28	29

April 2019				
M	T	W	T	F
1	2	3	4	5
8	9	10	11	12
15	16	17	18	19
22	23	24	25	26
29	30			

May 2019				
M	T	W	T	F
		1	2	3
6	7	8	9	10
13	14	15	16	17
20	21	22	23	24
28	29	30	31	

June 2019				
M	T	W	T	F
3	4	5	6	7
10	11	12	13	14
17	18	19	20	21
24	25	26	27	28

July 2019				
M	T	W	T	F
1	2	3	4	5
8	9	10	11	12
15	16	17	18	19
22	23	24	25	26
29	30	31		

August 2019				
M	T	W	T	F
			1	2
5	6	7	8	9
12	13	14	15	16
19	20	21	22	23
26	27	28	29	30

- New Teachers Report
- Teacher Planning Day
- Teacher Planning Day - (No Opt)
District-wide Professional Development
- Recess Day
- Beg/End of Grading Period
- Legal Holiday

Days In Grading Period
1- 81
2- 62
3- 73

For information on employee opt days, please refer to back of calendar.



MIAMI-DADE COUNTY PUBLIC SCHOOLS PARENT/STUDENT HANDBOOK

MIAMI-DADE COUNTY PUBLIC SCHOOLS 2018-2019 SCHOOL CALENDAR ADULT/VOCATIONAL EDUCATION

HOLIDAYS 2018	
September 3	Labor Day
November 12	Veterans' Day
November 22	Thanksgiving Day

HOLIDAYS 2019	
January 21	Observance of Dr. Martin Luther King, Jr.'s Birthday
February 18	All Presidents' Day
May 27	Observance of Memorial Day

Number of School Days in TRIMESTER 1					Number of School Days in TRIMESTER 2				Number of School Days in TRIMESTER 3				
Aug	Sept	Oct	Nov	Dec	Jan	Feb	Mar	Apr	Apr	May	June	July	Aug
10	17	22	17	15	17	19	16	10	11	22	19	21	0
TOTAL: 81					TOTAL: 62				TOTAL: 73				
TOTAL TRIMESTER DAYS STUDENTS ARE IN SCHOOL = 216													

*Teachers may opt to work one or two days, August 14, 15, 2018, in lieu of any of the teacher planning days except August 17, 2018, and the designated District-wide Professional Development Days, October 26, 2018 and November 6, 2018. Also, at the discretion of the principal, teachers may opt to conduct classes on a teacher planning day in lieu of a regularly scheduled class day during those times when special events and activities scheduled by the day school program disrupt on-campus adult education programs.

**August 1, 2019 is a Teacher planning day; not available to opt.



MIAMI-DADE COUNTY PUBLIC SCHOOLS
PARENT/STUDENT HANDBOOK

**APPENDIX B –Commonly Referenced State of Florida House Bills
and School Board Policies**

View all policies at <http://www.dadeschools.net/schoolboard/rules/>

Academics

- 2235 - MUSIC, ART, AND PHYSICAL EDUCATION
 - Music, art, and physical education are fundamental subjects in the school's curriculum because they contribute to every child's academic and social development. Art and Music education helps level the "learning field" across socio-economic boundaries while strengthening student problem-solving and critical thinking skills and contributing to the overall academic achievement of students.

- 2240 - CONTROVERSIAL ISSUES AND STUDENT EXPRESSION
 - Students are encouraged to participate in discussions, speeches, and other expressions in which many points of view, including those that are controversial, are freely explored. A controversial issue is a topic on which opposing points of view have been promulgated by responsible opinion or likely to arouse both support and opposition in the community.

- 2370.01 – VIRTUAL INSTRUCTION
 - The enrollment period for the District-operated full-time virtual instruction program, Miami-Dade Online Academy, opens in the spring of each school year for a minimum of ninety days and closes thirty days before the first day of the school year.

- 2421 - K-12 CAREER-TECHNICAL EDUCATION PROGRAM
 - Career-technical education is designed to provide career and technical education experiences. These experiences will complement and reinforce academic concepts that are particularly amenable to contextualized learning in a distinct career area and provide occupationally specific skills.

- 2440 - SUMMER SCHOOL
 - The School Board may conduct a summer program of academic instruction for students in grades K-12 and Special Education (SPED) students needing extended school year services as identified in their Individual Education Plan (I.E.P.). The Board may also choose to implement summer enhancement programs, contingent upon available funding. The Board shall provide transportation for full-time SPED students and other students as appropriate.

- 2510 – INSTRUCTIONAL MATERIALS AND RESOURCES
 - Parents have the ability to access their child's instructional materials at <http://im.dadeschools.net/>.
 - Additionally, in accordance with Policy 2416, parents have the right to inspect, upon request, any instructional material used as part of the educational curriculum of the student and within a reasonable period of time after the request is received by the building principal.



MIAMI-DADE COUNTY PUBLIC SCHOOLS PARENT/STUDENT HANDBOOK

- 5410 - STUDENT PROGRESSION PLAN

- Provides guidance to teachers, school and district administrators, parents and other stakeholders regarding the requirements and procedures for students to progress from one grade to the next, Kindergarten through grade 12 and Adult Education. The information presented in the document is derived from requirements set forth by Florida Statutes, State Board of Education Rules and policies established by The School Board of Miami-Dade County.

Accident Reports/Incident Reports/School Safety

- 3213 - STUDENT SUPERVISION AND WELFARE

- Protecting the physical and emotional well-being of students is of paramount importance. Each instructional staff member shall maintain the highest professional, moral, and ethical standards in dealing with the supervision, control, and protection of students on or off school property

- 5540 - INVESTIGATIONS INVOLVING STUDENTS

- School administrators shall respond to incidents involving students occurring on school grounds or at school-sponsored events. When conducting an initial fact inquiry, if an administrator suspects that a crime has been committed, they must report the matter to School Police or another appropriate law enforcement agency to assume the investigative responsibilities.

- 5772 - WEAPONS

- Students are prohibited from possessing, storing, making, or using a weapon, including a concealed weapon, in a school safety zone and any setting that is under the control and supervision of the School Board for the purpose of school activities approved and authorized by the Board including, but not limited to, property leased, owned, or contracted for by the Board, a school-sponsored event, or in a Board-owned vehicle.

- 7217 - WEAPONS

- Visitors are prohibited from possessing, storing, making, or using a weapon, including a concealed weapon, in a school safety zone and any setting that is under the control and supervision of the Board for the purpose of school activities approved and authorized by the Board including, but not limited to, property leased, owned, or contracted for by the Board, a school-sponsored event, or in a Board-owned vehicle.

- 8405 - SCHOOL SAFETY

- The School Board is committed to maintaining a safe and drug-free environment in all of the District's schools. School crime and violence are multifaceted problems that need to be addressed in a manner that utilizes all available resources in the community through a coordinated effort of School District personnel, law enforcement agencies, and families. School administrators and local law enforcement officials must work together to provide for the safety and welfare of students while they are at school or a school-related event or are on their way to and from school.



MIAMI-DADE COUNTY PUBLIC SCHOOLS PARENT/STUDENT HANDBOOK

- 8410 - CRITICAL INCIDENT RESPONSE/EMERGENCY PROCEDURES

The District Critical Incident Response Team (DCIRT) is responsible for assisting schools with emergencies/critical incidents as needed and coordinate District resources.

Admission, Registration and Immunization Requirements

- 5112 - ENTRANCE REQUIREMENTS

- Establishes the admission and registration requirements for students entering school. The following documents and forms are to be provided upon initial registration:

- Original birth certificate
- Verification of age and legal name
- Proof of a physical examination by an approved health care provider including a tuberculosis clinical screening, appropriate follow-up, and a certificate of immunization
- Two (2) verification of parent/legal current residence (address)

- 5114 - FOREIGN STUDENTS

- Entry requirements into schools are the same for all students, regardless of country of birth and immigration status. All students will register at the school of the actual residence of the parent in the attendance area as approved by the School Board.

- 5320 – IMMUNIZATION

- All students shall be immunized against polio, measles, diphtheria, rubella (German measles), pertussis, tetanus, mumps, hepatitis B, and Haemophilus Influenzae in accordance with State law, unless specifically exempt for medical or religious reasons. All Pre-K and Kindergarten students must also be immunized against varicella (chicken pox) or verification from the parent of a documented history of the disease. This policy applies to students who currently attend school in the District and those eligible to attend.

Animals on District Property

- 8390 - ANIMALS ON DISTRICT PROPERTY

- Service animals as required by law are permitted in schools. “Service animals” pursuant to 28 C.F.R. 35.104, means any dog that is individually trained to do work or perform tasks for the benefit of an individual with a disability, including a physical, sensory, psychiatric, intellectual, or other mental disability.
- All animals, including service animals, housed on District property or brought on District property on a regular basis must meet every State and County veterinary requirement, including but not limited to, rabies vaccination or other inoculations required to be properly licensed.
- Students are not allowed to bring pets to school.

Anti-Discrimination Policy

- 3362 - ANTI-DISCRIMINATION/HARASSMENT

- The Board will vigorously enforce its prohibition against discrimination/harassment based on sex, race, color, ethnic or national origin, citizenship status, religion, marital status, disability, genetic information, age, political beliefs, sexual



MIAMI-DADE COUNTY PUBLIC SCHOOLS PARENT/STUDENT HANDBOOK

orientation, gender, gender identification, social and family background, linguistic preference, pregnancy, and any other legally prohibited basis.

- This policy provides the steps to individual complaints of discrimination of harassing conduct and the process for addressing the complaints.
- **5131 – STUDENT TRANSFERS AND CONTROLLED OPEN ENROLLMENT**

A parent may request a Hope Scholarship for a student who was subjected to an incident of battery, harassment, hazing, bullying, kidnapping, physical attack, robbery, sexual offense, assault, threat, intimidation, or fighting at school.
- **5517 – ANTI-DISCRIMINATION/HARASSMENT (STUDENTS)**
 - The School Board shall comply with all Federal laws and regulations prohibiting discrimination and all requirements and regulations of the U.S. Department of Education. The Board will enforce its prohibition against discrimination/harassment based on sex, race, color, ethnic or national origin, religion, marital status, disability, age, political beliefs, sexual orientation, gender, gender identification, social and family background, linguistic preference, pregnancy, and any other basis prohibited by law. This policy prohibits discrimination and harassment at all School District operations, programs, and activities on school property, or at another location if it occurs during an activity sponsored by the Board.
- **5517.01 – BULLYING AND HARASSMENT**
 - The School Board is committed to providing a safe learning environment for all students and shall strive to eradicate bullying and harassment in its schools by providing awareness, prevention, and education in promoting a school atmosphere in which bullying, harassment, and intimidation will not be tolerated by students, Board employees, visitors, or volunteers.
- **5517.02 - DISCRIMINATION/HARASSMENT COMPLAINT PROCEDURES FOR STUDENTS**
 - Students and parents are encouraged to promptly report complaints of discriminatory or harassing conduct to their Principal. Additionally, they may file the complaint directly with the Region Office or the District's Office of Civil Rights Compliance (CRC).
 - The Office of Civil Rights Compliance (CRC) is responsible for investigating complaints of discrimination and harassment, including sexual harassment and retaliation filed by employees, students and their parents.
 - This policy provides the steps to individual complaints of discrimination of harassing conduct and the process for addressing the complaints.

Attendance Policy/School Hours

- **5200 – ATTENDANCE:**
 - Student attendance is a means of improving student performance and critical in raising student achievement. Together, the staff of Miami-Dade County Public Schools, students, parents and the community must make every effort to lessen the loss of instructional time to students.



MIAMI-DADE COUNTY PUBLIC SCHOOLS PARENT/STUDENT HANDBOOK

- 5225 - ABSENCES FOR RELIGIOUS HOLIDAYS
 - Student absences for religious purposes, as identified on the approved holidays listed in the [Student Attendance Reporting Procedures PK-12 Handbook](#), may not prohibit students from receiving attendance awards or other attendance incentives at the school level, region level, or District level.
- 5230 - LATE ARRIVAL AND EARLY DISMISSAL
 - Students shall be in attendance throughout the school day. If a student will be late to school or dismissed before the end of the school day, the parent shall notify the school in advance and state the reason for the tardiness or early dismissal. Justifiable reasons shall be determined by the principal. Students will be counted absent if they are not present in class for at least half of the class period. To be counted "present" for the day, the student must be in attendance for a minimum of **two hours** of the day unless extenuating circumstances exist.
- 8220 - SCHOOL DAY
 - The Superintendent shall annually establish the hours of the school day. The Superintendent may authorize exceptions from the regular school day.
 - The Superintendent may close the schools, delay the opening of school, or dismiss school early when such alteration in the regular session is required for the protection of the health and safety of students and staff members.

Ceremonies & Observances

- 8800 - RELIGIOUS/PATRIOTIC CEREMONIES AND OBSERVANCES
 - Acknowledgement of, explanation of, and teaching about religious holidays of various religions is permitted. Celebration activities involving nonreligious decorations and use of secular works are permitted, but it is the responsibility of all faculty members to ensure that such activities are strictly voluntary, do not place an atmosphere of social compulsion or ostracism on minority groups or individuals, and do not interfere with the regular school program.

Class Size

- CLASS SIZE STATE STATUTE
 - Florida citizens approved an amendment that set limits on the number of students in core academic classes in public schools. The amendment requires classes to be in compliance at the class level. However, pursuant to language passed by the 2013 Florida Legislature in HB 7009 and subsequently approved by the Governor, amending Florida Statutes 1002.31, Public School Parental Choice, the calculation for compliance with class size limits pursuant to s. 1003.03 for a school or program that is a public school of choice is measured by the average number of students at the school level.

Clinic

- 5330 – USE OF MEDICATIONS
 - The School Board shall not be responsible for the diagnosis and treatment of student illness. The administration of prescribed medication and/or medically-prescribed treatments to a student during school hours will be permitted only when failure to do so would jeopardize the health of the student, the student would not be able to attend school if the medication or treatment were not made available



MIAMI-DADE COUNTY PUBLIC SCHOOLS PARENT/STUDENT HANDBOOK

during school hours, or the child is disabled and requires medication to benefit from his/her educational program.

Code of Student Conduct

- **2451 - ALTERNATIVE SCHOOL PROGRAMS**
 - The Superintendent may provide alternative education programs for students who, in the opinion of the Superintendent, will benefit from this educational option. Participation in an alternative program does not exempt the student from complying with school attendance rules or the Code of Conduct.

- **5136.02 - SEXTING**
 - Sexting is the act of sending or forwarding through cellular telephones and other electronic media sexually explicit, nude, or partially nude photographs/images. [add something about disciplinary measures] It is the District's mission to ensure the social, physical, psychological, and academic well-being of all students. The educational purposes of the schools are best accomplished in a climate of student behavior that is socially acceptable and conducive to the learning and teaching process.

- **5500 - STUDENT CONDUCT AND DISCIPLINE**
 - The Miami-Dade County School Board [Code of Student Conduct \(COSC\)](#) focuses on providing and maintaining a safe and positive learning environment for students, faculty, staff and community.
 - A major consideration in the application of the Code of Student Conduct is cultivating a positive school climate to support academic achievement, promote fairness, civility, acceptance of diversity, and mutual respect. Toward that end, the range of inappropriate behavior is divided into five groups, along with both recommended and mandated corrective strategies.
 - The Code of Student Conduct addresses the role of the parents/guardians, the students, and school, but also focuses on core values and model student behavior, rights and responsibilities of students, addressing student behavior, and disciplinary procedures. Furthermore, teachers, counselors and administrators work to use a variety of progressive corrective or guidance strategies to correct the inappropriate behaviors.

- **5511 - DRESS CODE AND SCHOOL UNIFORMS**
 - Students are expected to come to school with proper attention having been given to personal cleanliness, grooming, and neatness of dress. Students whose personal attire or grooming distracts the attention of other students or teachers from their school work shall be required to make the necessary alterations to such attire or grooming before entering the classroom or be sent home by the principal to be properly prepared for school. Students who fail to meet the minimum acceptable standards of cleanliness and neatness as determined by the principal and as specified in this policy shall be subject to appropriate disciplinary measures.



MIAMI-DADE COUNTY PUBLIC SCHOOLS PARENT/STUDENT HANDBOOK

Digital Conversion/Social Media

- 7540.03 - STUDENT RESPONSIBLE USE OF TECHNOLOGY, SOCIAL MEDIA, AND DISTRICT NETWORK SYSTEMS
 - The School Board provides students access to a large variety of technology and network resources which provide multiple opportunities to enhance learning and improve communication within the school district and the community. All users must, however, exercise appropriate and responsible use of school and District technology and information systems. Users include anyone authorized by administration to use the network. This policy is intended to promote the most effective, safe, productive, and instructionally sound uses of network information and communication tools.

Equal Opportunity

- 2260 - NONDISCRIMINATION AND ACCESS TO EQUAL EDUCATIONAL OPPORTUNITY
 - The School Board shall provide equal opportunity for all students and will not discriminate or tolerate harassment in its educational programs or activities on any basis prohibited by law or Board policy.
- 5111.01 - HOMELESS STUDENTS
 - Each child of a homeless individual and each homeless youth shall have equal access to the same free, appropriate public education, including a public preschool education, as provided to other children and youths.

Fieldtrips/School Social Events

- 2340 - FIELD AND OTHER DISTRICT-SPONSORED TRIPS
 - Field trips should supplement and enrich classroom procedures by providing learning experiences in an environment outside the schools, arouse new interests among students, help students relate school experiences to the reality of the world outside of school, bring the resources of the community - natural, artistic, industrial, commercial, governmental, educational - within the student's learning experience, and afford students the opportunity to study real things and real processes in their actual environment.
 - Other District-sponsored trips are defined as any planned, student-travel activity approved as part of the District's total educational program and is under the direct supervision and control of an instructional staff member or any advisor designated by the Superintendent.
- 5850 - SCHOOL SOCIAL EVENTS
 - School facilities and appropriate staff will be made available for social events approved by the principal within and outside school facilities.
- 8640 - TRANSPORTATION FOR FIELD AND OTHER DISTRICT-SPONSORED TRIPS
 - Regular or special-purpose school vehicles shall be used for transportation on field and other District-sponsored trips.



MIAMI-DADE COUNTY PUBLIC SCHOOLS PARENT/STUDENT HANDBOOK

Financial Obligations

- 6152 - STUDENT FEES
 - The School Board may levy certain charges to students to facilitate the utilization of adequate, appropriate learning materials used in the course of instruction.

Food & Nutrition/Wellness Policy

- 8500 - FOOD SERVICES
 - The Food and Nutrition service program strives to provide school food services consistent with the nutritional needs of students and provide school food services that contribute to the student's educational experiences and the development of desirable eating habits.
- 8510 - WELLNESS POLICY
 - The District is committed to providing a healthy environment for students and staff within the school environment, recognizing that individuals must be physically, mentally, and socially healthy in order to promote wellness and academic performance.
 - The District focuses on achieving five goals: nutrition, physical education, physical activity: recess, health & nutrition literacy and preventive healthcare.
- 8531 - FREE AND REDUCED-PRICE MEALS
 - All students determined to be economically needy shall be provided upon request a free or reduced price meal or meals at school.

Fundraising

- 5830 – STUDENT FUNDRAISING
 - Student fundraising by students is limited in order to prevent disruption and includes student solicitation and collection of money for any purpose including collection of money in exchange for tickets, papers, or any other goods or services. Student fundraising in school, on school property, or at any school-sponsored event is permitted only when the profit is to be used for school purposes or for an activity connected with the schools.
 - No student, school organization, or member of the school staff may solicit funds in the name of the school from the public for any purpose without prior approval of the school principal and the Region Superintendent or his/her designee. All approvals must be in writing using the approved District forms and must be retained at the school for audit purposes.
- 6605 – CROWDFUNDING
 - Crowdfunding activities aimed at raising funds for a specific classroom or school activity, including extra-curricular activity, or to obtain supplemental resources (e.g., supplies or equipment) that are not required to provide a free appropriate public education to any students in the classroom may be permitted, but only with the specific approval by the principal and the region administrator. Crowdfunding for specific causes requires the approval of the Superintendent or his/her designee.



MIAMI-DADE COUNTY PUBLIC SCHOOLS PARENT/STUDENT HANDBOOK

- 9211 - PARENT ORGANIZATIONS, BOOSTER CLUBS, AND OTHER FUND-RAISING ACTIVITIES
 - The School Board appreciates the efforts of all organizations whose objectives are to enhance the educational experiences of District students, to help meet educational needs of students and/or provide extra educational benefits.

Health Screening

- 2410 - SCHOOL HEALTH SERVICES PROGRAM
 - The health services provided by the District shall supplement, not replace, parental responsibility, and shall appraise, protect, and promote student health. These services shall be designed to encourage parents to devote attention to child health, to discover health problems, and to encourage the use of the services of physicians, dentists, and community health agencies as needed. Vision, hearing, scoliosis and growth and development screenings are conducted based on mandated grade levels.
 - Screenings do not substitute a thorough examination in a medical provider's office.

Homework

- 2330 - HOMEWORK
 - Homework is an essential component of the learning process for students with the assignment of meaningful learning activities. Assignments should be based on learning outcomes that build students' conceptual understanding, develop thinking skills, and focus on the application of knowledge.

Internship

- 2424 - STUDENT INTERNSHIPS
 - Student participation in an internship program authorized by the High School to Business Career Enhancement Act may serve as a positive educational experience and provide a foundation for future employment opportunities.

Parent Choice Student Transfers

- 2431 - INTERSCHOLASTIC ATHLETICS
 - All activities relating to competitive sport contests, games, or events involving individual students or teams of students from high schools in this District with those from a high school in another district.
 - All high schools shall be members of and governed by the Florida High School Athletic Association (FHSAA) rules and regulations and shall comply with the eligibility requirements established by the FHSAA.
- 5120 - STUDENT SCHOOL ASSIGNMENT AND ATTENDANCE BOUNDARY COMMITTEE
 - The assignment of students to District schools shall be consistent with the best interests of students and the best use of District resources.
- 5131 – STUDENT TRANSFERS AND CONTROLLED OPEN ENROLLMENT
 - This policy governs all regular school transfers from one (1) school to another, except for transfers to magnet schools and programs that are subject to specific admissions requirements and/or random lotteries that are governed by Policy [2370](#), Magnet Programs/Schools.



MIAMI-DADE COUNTY PUBLIC SCHOOLS PARENT/STUDENT HANDBOOK

- Controlled Open Enrollment allows the School District to make K-12 school assignments using parents indicated preferential educational choice in-county and out-of-county. This section of the policy does not apply to charter schools. Charter schools must adopt their own controlled open enrollment plan.
- Controlled Open Enrollment is active during a specific window period between end of year and the subsequent school year.

Parent Involvement

- 2111 - PARENT INVOLVEMENT– A HOME-SCHOOL-DISTRICT PARTNERSHIP
 - A collaborative environment is encouraged in which the parents and families of District students are invited and encouraged to be involved stakeholders in the school community. This policy establishes the framework and responsibilities for implementation of strategies to increase family and community involvement. A copy of this policy must be distributed to all parents.
- 9210 - PARENT ORGANIZATIONS
 - The Parent-Teacher/Parent-Teacher-Student Associations (PTA/PTSA) in the District are acknowledged as sincerely interested in, and staunch supporters of public education in Miami-Dade County.

Pledge of Allegiance

- 8810 - THE AMERICAN FLAG
 - The Pledge of Allegiance shall be recited at the beginning of the day in every school.
 - A student has the right not to participate in reciting the pledge. Upon written request by his/her parent, the student must be excused from reciting the pledge, including standing and placing the right hand over his/her heart.

Privacy

- 2416 - STUDENT PRIVACY AND PARENTAL ACCESS TO INFORMATION
 - Parents have the right to inspect, upon request, a survey or evaluation created by a third party or any instrument used in the collection of personal information before the survey/evaluation is administered or distributed by the school to the student. The parent will have access to the survey/evaluation or instrument within a reasonable period of time after the request is received by the principal.

Schools of Choice/Magnet Schools

- 2370 - MAGNET PROGRAMS/SCHOOLS
 - Magnet programs/schools broaden public school choice, stem declining enrollment, mitigate overcrowding, help comply with Federal and State-mandated public school choice provisions, accommodate parent/student interest, improve the quality of education, and promote diverse student enrollments. Magnet programs/schools are unique educational programs operating within the District, for which additional resources and/or ancillary services may be provided to help make such educational experiences available to students beyond a single attendance boundary area.



MIAMI-DADE COUNTY PUBLIC SCHOOLS PARENT/STUDENT HANDBOOK

School Transportation/Bus Safety Conduct

- 8600 – TRANSPORTATION
 - Students living more than two miles from their home school will be eligible for District-provided bus transportation. Students who attend school out of their home school zone will not be eligible for District-provided transportation.

Special Education

- 2460 – EXCEPTIONAL STUDENT EDUCATION
 - The School Board shall provide a free, appropriate, public education for students with disabilities according to State and Federal laws, rules, and regulations and shall implement the procedures document entitled Exceptional Student Education Policies and Procedures.

Student Activities

- 5845 - STUDENT ACTIVITIES
 - All clubs and organizations approved by the principal to operate within the school must comply with this district policy. A student who wishes to represent the school through interscholastic competitions or performance must comply with the criteria set forth in policy.

Student Records/Access to Student Records

- 8330 - STUDENT RECORDS
 - Parents and eligible students have the right to access education records, including the right to inspect and review those records, and have the right to waive their access to their education records in certain circumstances. Prior written consent of the parent, guardian, or eligible student shall be obtained prior to disclosing personally identifiable student information, except under certain circumstances.
- 8350 - CONFIDENTIALITY
 - A student's educational record and all personally identifiable information shall not be properly released except on the condition that the information being transferred will not be subsequently released to any other party without first obtaining the consent of the parent or adult/eligible student.

Student Services

- 2290 - CHARACTER EDUCATION
 - The School Board shall assist all students in developing the core values and strength of character needed for them by to become caring, responsible citizens at home, school, and in the community. There are nine core values that form the basis for the character education program. These values are Citizenship, Cooperation, Fairness, Honesty, Kindness, Integrity, Pursuit of Excellence, Respect, and Responsibility.
- 5530 - DRUG PREVENTION
 - Schools shall strive to prevent drug abuse and help drug abusers through educational means.
 - The use, possession, concealment, or distribution of any drug or any drug-related paraphernalia, or the misuse of a product containing a substance that can provide



MIAMI-DADE COUNTY PUBLIC SCHOOLS PARENT/STUDENT HANDBOOK

an intoxicating or mood-altering effect or the misuse of any "over-the-counter" medications or substances are prohibited on school grounds, on school vehicles, and at any school-sponsored event.

Title I School-wide Program

- 2261 - TITLE I SERVICES
 - The School Board shall augment the educational program of disadvantaged students through the use of Federal funds, in compliance with all Federal or statutory requirements as outlined in the Elementary and Secondary School Improvement Act of 1965 and its amendments.

Visitors

- 9150 - SCHOOL VISITORS
 - Parents, other adult residents of the community, and interested educators are encouraged to visit schools.
 - The Principal has the authority, however, to prohibit the entry of any person to a school or expel any person when there is reason to believe the presence of such person would be detrimental. If an individual refuses to leave the school grounds or creates a disturbance, the principal is authorized to request assistance from School Police or the local law enforcement agency to remove the individual.

Volunteer Program

- 2430.01 - SCHOOL VOLUNTEERS
 - The School Board recognizes that certain programs and activities can be enhanced through the use of volunteers who have knowledge or skills that will be helpful to members of the school staff who are responsible for the conduct of those programs and activities. A school volunteer is any non-compensated person who may be appointed by the Superintendent or his/her designee. School volunteers may include, but are not limited to, parents, senior citizens, students, and others who assist the teacher or other members of the school staff.

